

# Tribal Accreditation Learning Community

To join by phone:

1-877-668-4493

Access code: 737 345 714

FEBRUARY 9, 2018

**TOPIC: ACCREDITATION READINESS ASSESSMENTS- WHAT  
DO THEY REALLY MEAN?**

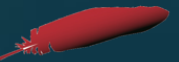
KARRIE JOSEPH, NIHB

**TRIBAL PANEL: MISSISSIPPI BAND OF CHOCTAW INDIANS AND  
CONFEDERATED TRIBES OF WARM SPRINGS**

DURNENE FARMER, MISSISSIPPI BAND OF CHOCTAW INDIANS

KATIE RUSSELL, CONFEDERATED TRIBES OF WARM SPRINGS

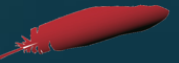
National Indian  
Health Board



# TALC Webinar Protocols



- ▶ The meeting will be recorded.
- ▶ Please keep your phones on mute to minimize background noise.
- ▶ Use the chat box anytime or the phone line for questions during the Q&A
- ▶ Feel free to ask questions of other people on the line as well
- ▶ A post webinar evaluation survey will pop up when you leave the meeting, please fill that out



# Community Readiness Model

**Community Readiness  
for Community Change**

TRI-ETHNIC CENTER  
FOR PREVENTION RESEARCH



Colorado  
State  
University

- Tri-ethnic Center for Research at Colorado State University
- Evidence base for substance abuse, other health issues in Native American Communities



# Accreditation Readiness Assessments – What Do They Really Mean?



# Accreditation Readiness

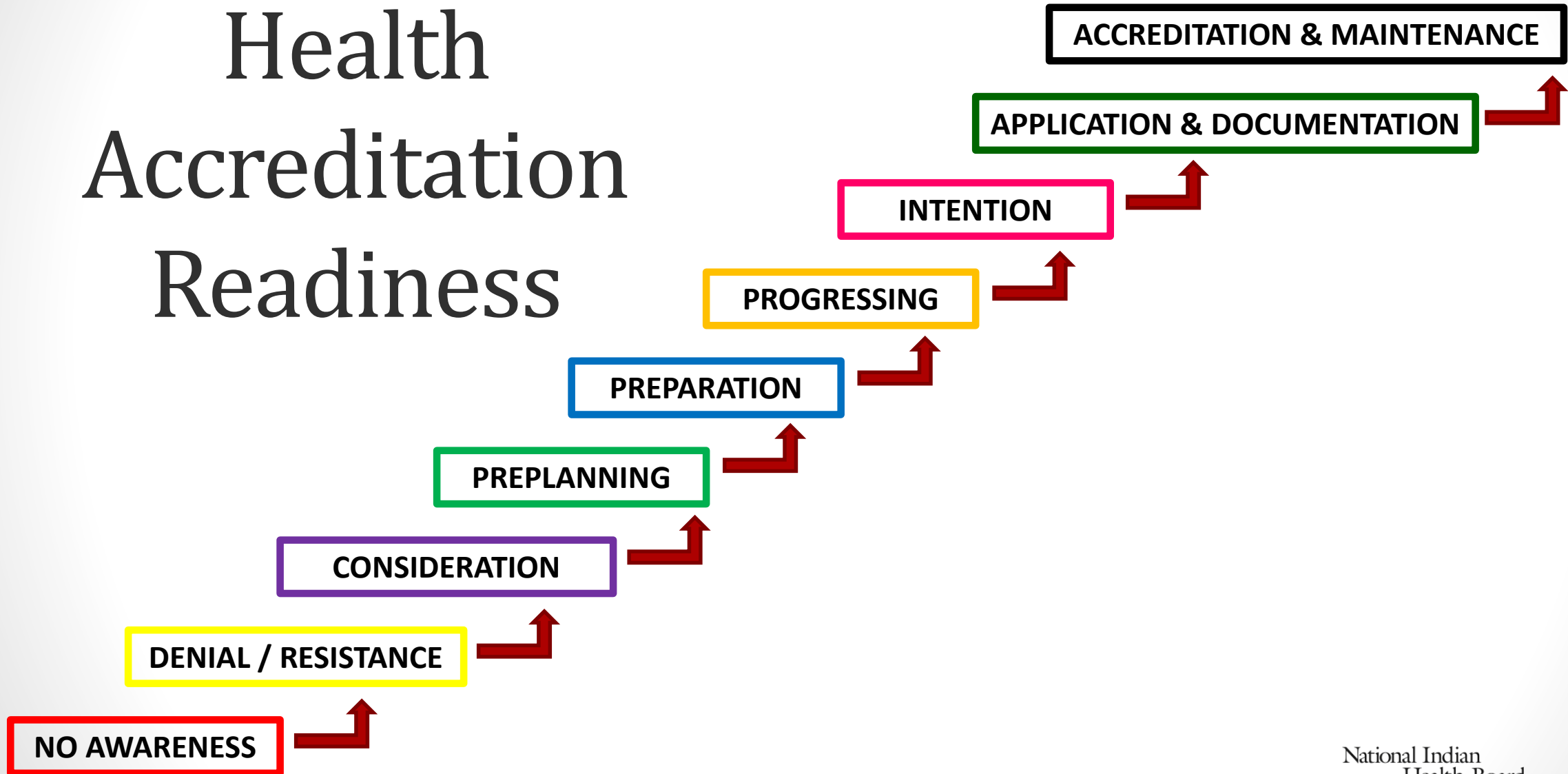
- If community readiness is the degree to which a community is ready to take action on an issue
- **Accreditation Readiness is the degree to which a public health system is ready to take action (work toward and achieve) public health accreditation.**



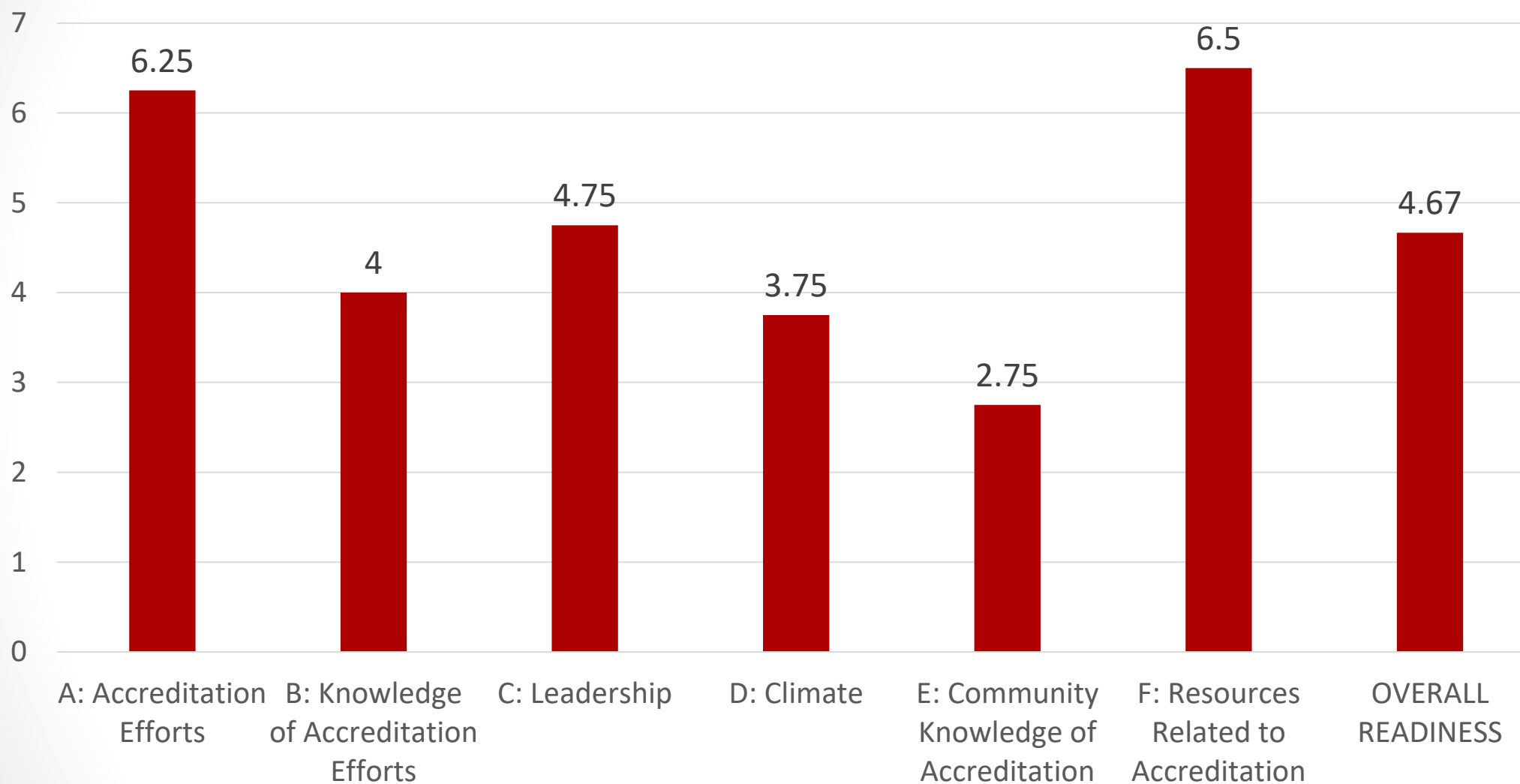
# Accreditation Adaptation



# Levels of Public Health Accreditation Readiness



# Tribe Accreditation Readiness Pre-Scores





# Reminders

- Readiness is not always linear
- Tribal ASI funding is not dependent on your score
- Scores help you plan for the near future
- A reasonable goal is to advance 1 point per dimension
- Small steps = big gains



# Community Health Assessments

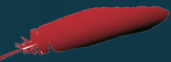
Mississippi Band of Choctaw Indians

Durnene Farmer, Mississippi Band of Choctaw Indians

Confederated Tribes of Warm Springs

Katie Russell, Confederated Tribes of Warm Springs

National Indian  
Health Board



# Tribal Panel

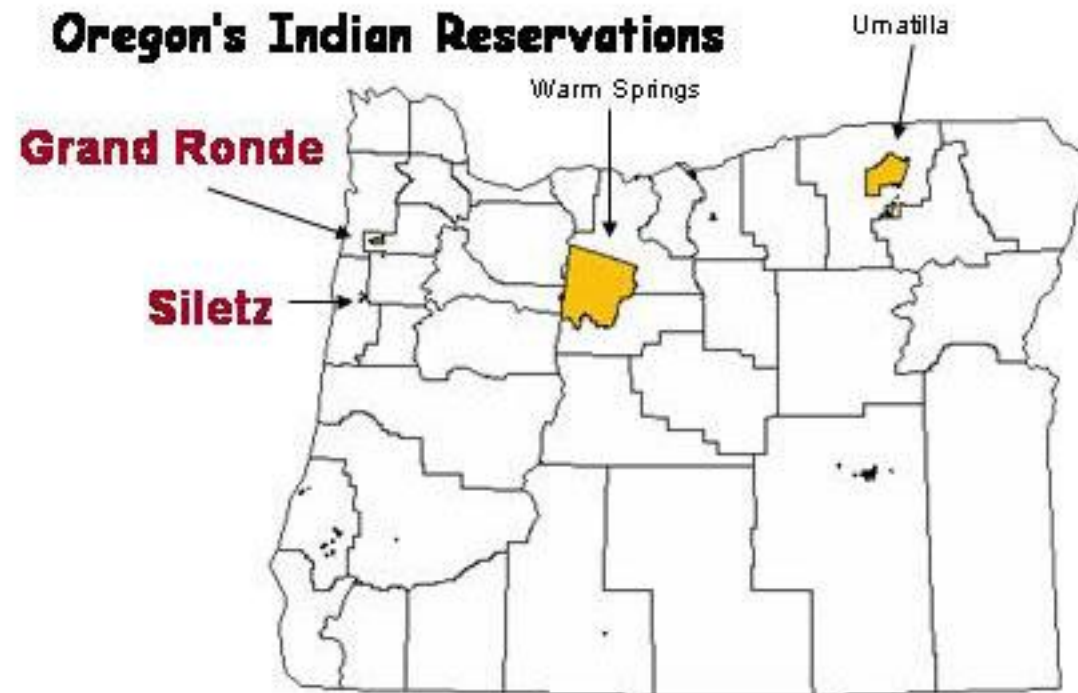


**Choctaw Public Health Services**

*Healthy Community, Healthy Culture*



# Location

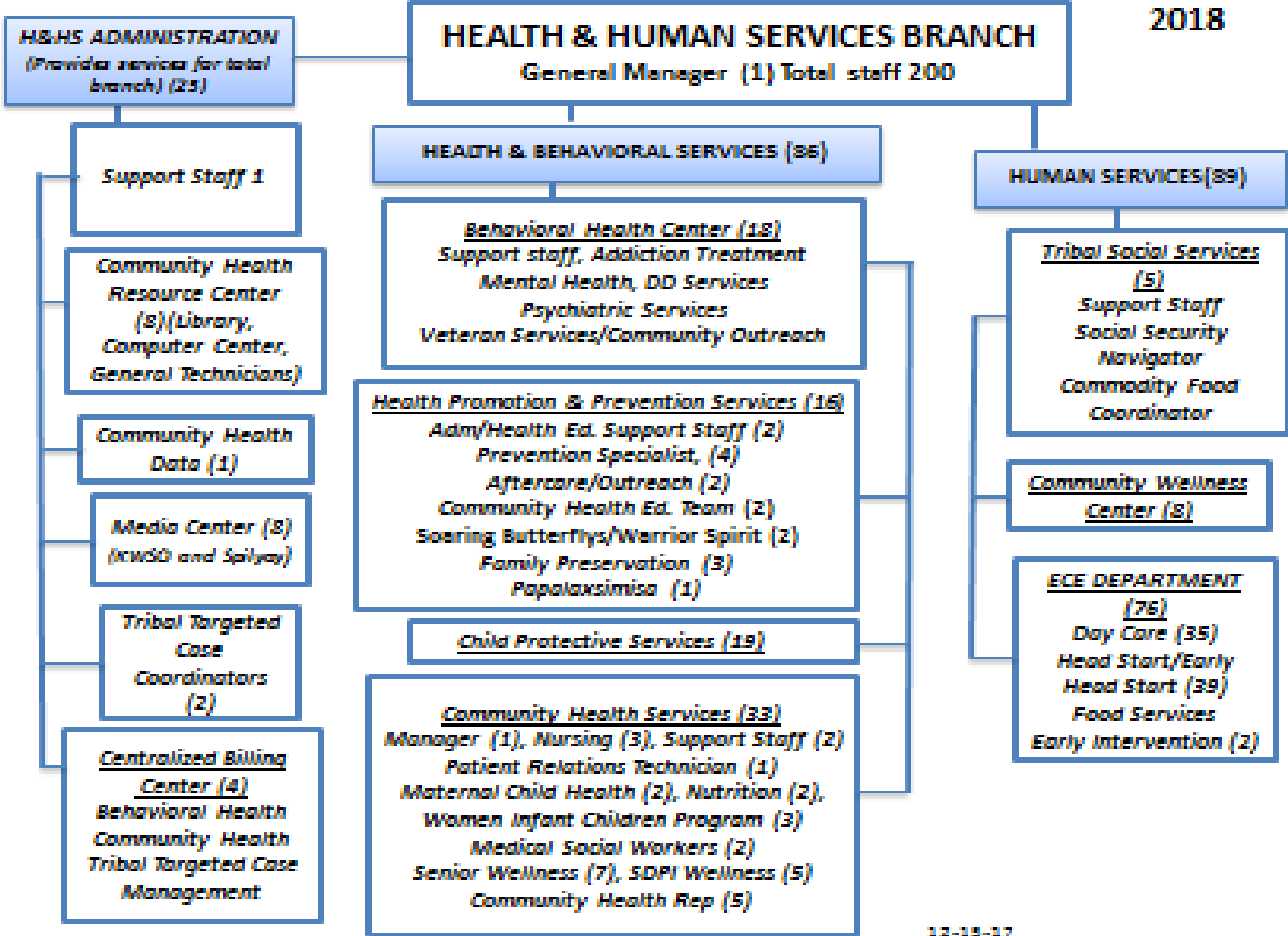


# Tribe Background

- Population: 5000 people living on the Reservation
- Governing Body: Tribal Council, Community Health is part of the Health and Human Services Branch
- Main Industries: Indian Head Casino, Kah-nee-ta Resort, WS Forest Products
  - Developing- Drone Park, Cannabis Production, Travel Center



# Health and Human Services Org Chart



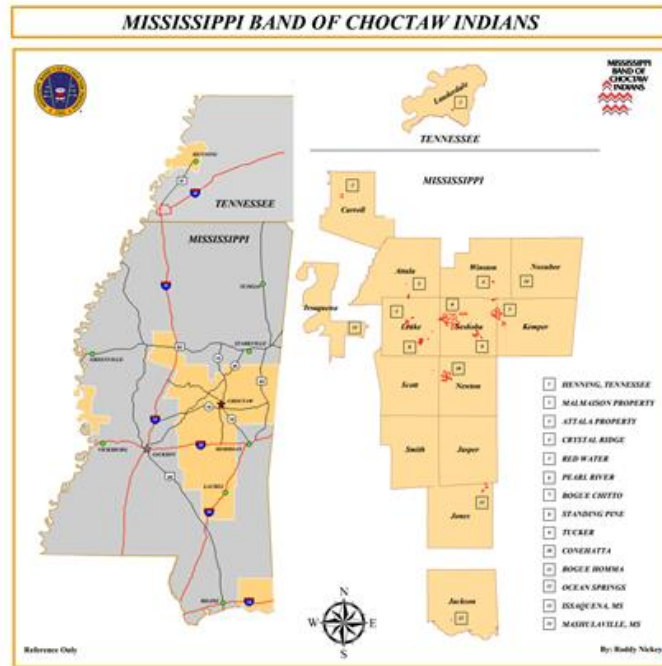


### Purpose:

In support of the Choctaw Health Center's mission, the Public Health Services Department's purpose is to enable members of the MBCI to achieve optimal health by improving each individual's knowledge; attitudes, and practices about health by promoting, supporting, and assisting the Choctaw Health Center with Health care delivery at the community level.

### Choctaw Health Center

Pearl River Reservation is now home to a new state-of-the-art health facility. The newly completed Choctaw Health Center encompasses a 36-room outpatient department, a 18-chair dental department, six treatment rooms (two equipped for trauma), an emergency department, emergency medical services, various treatment facilities behavioral health and public health services, along with all necessary support services.



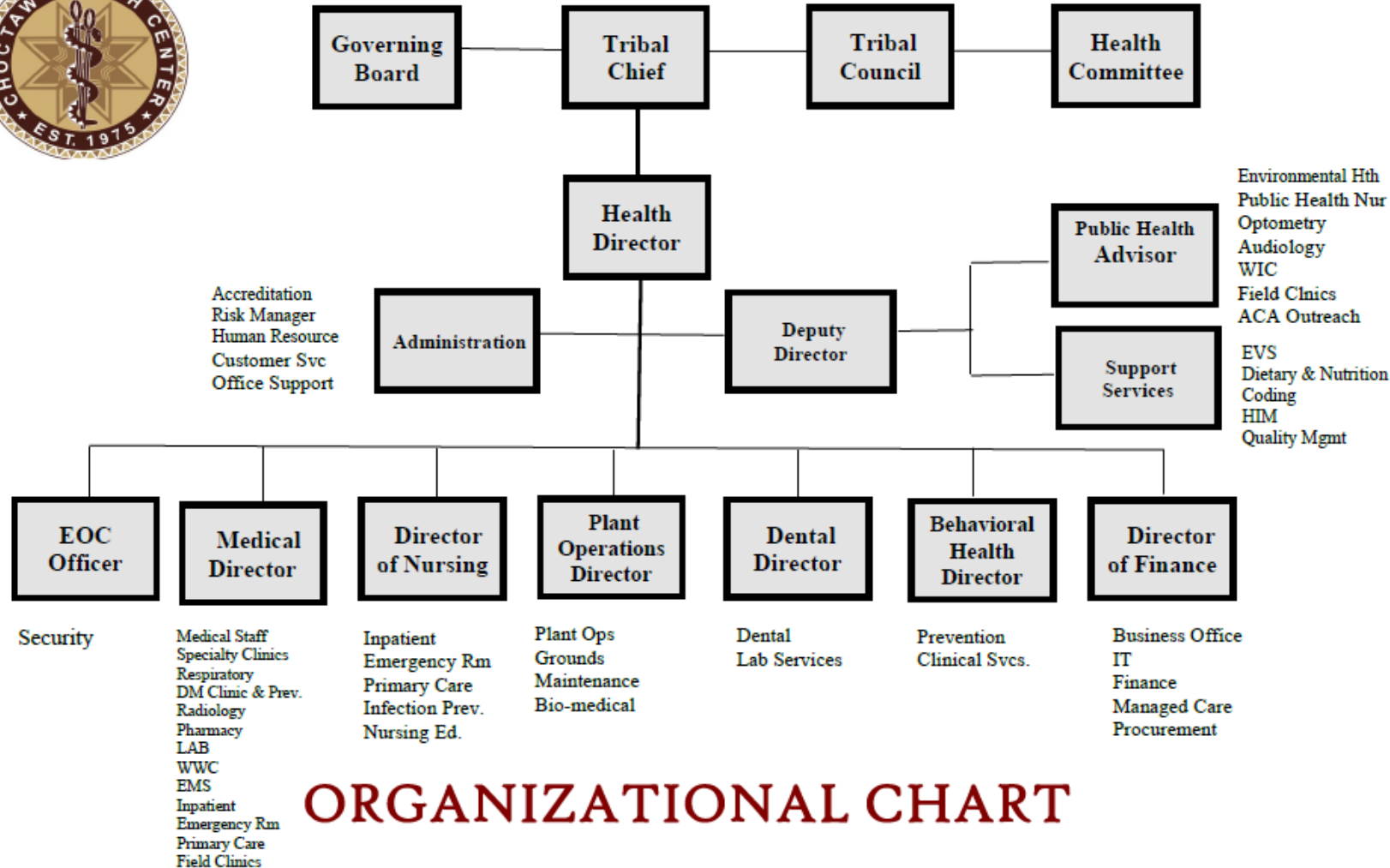
## MBCI FACTS

- Tribal enrolled membership exceeds 10,800 individuals
- Tribal government is a democratic form of government: Legislative, Executive, and Judicial.
- Tribe owns and operates a diversified portfolio of manufacturing, service, retail, hospitality and construction enterprises.
- Choctaw language is still spoken fluently in majority of homes.





# Organizational Chart



## ORGANIZATIONAL CHART CHOCTAW HEALTH CENTER

PHS Employees:  
13 CHRs  
8 Departmental

### Services Provided:

**Satellite Clinics:** BogueChitto, Conehatta and Red Water clinics provide medical health care to outlying communities through the services of a nurse practitioner, licensed practical nurse, clinic clerk and outreach services through community health technicians.

**Audiology:** hearing screenings and exams by an Audiologist for hearing problems, including hearing screenings by the Audiometric Technician, for children from pre-K through 12th grade and adults.

**Optometry:** vision services includes a licensed Optometrist for eye exams, diabetic retinopathy exams, and eyewear fittings, adjustments, & minor eyewear repair by the Optometric Technician.

**Tuberculosis:** surveillance screenings by staff for TB infection, TB disease, and follow-up on all persons exposed to assure appropriate care.

**Sexually Transmitted Infection/Disease Control:** infection and disease screening, counseling, testing, treatment and contact investigation.

**Public Health Nursing & Outreach:** personnel participates in programs for the community, including the post-partum home visitation program, health education/awareness activities, special clinics offered to the tribal communities through the CHC, satellite clinics, and other MBCI tribal programs & events.



# Community Health Assessments



**Choctaw Public Health Services**

*Healthy Community, Healthy Culture*



# Defining Your Population



# CHA Population

- Community definition
  - All persons eligible for Indian health services
    - Enrolled MBCI members or members of other federally recognized American Indian and Alaska Native and direct lineal descendants.
  - Living 'on' or 'near' Tribal lands considered as Choctaw Community
  - Past or current direct service users of Choctaw Health Center



# Developing a Survey Instrument



# Developing a Survey Instrument – What Were the Biggest Obstacles?



# Implementing the Survey Methods? Data Collection? Data Analysis



# After the Survey – Plans for Community Outreach?

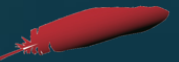


# Questions and Answers



Please type your questions in the chat box or unmute your phones to speak.

National Indian  
Health Board





# Upcoming Trainings/Events



**Save the Date**


*Balance  
Harmony  
Culture  
Health*

National Indian Health Board  
9th Annual

**NATIONAL TRIBAL  
PUBLIC  
HEALTH  
SUMMIT**

MAY 22-24, 2018 • PRIOR LAKE, MINNESOTA

**Registration Open Now! Register by April 7 for early bird fees**



**PHIT** Public Health  
Improvement Training

**June 26-27, 2018 in Atlanta, GA**

**[For more information about the conference, click here](#)**

**NNPHI: The Open Forum for Quality  
Improvement and Innovation in Public  
Health: March 29-30, 2018, Louisville,  
Kentucky**

**Registration is now open!**

**[Register by February 16, 2018](#)**

# Thank you!

## Next TALC call:

March 9, 2018

2:00-3:00pm ET

**TRIBAL PRESENTATION: Eastern Band of Cherokee Indians**

**TOPIC: Tips for Successful Mentoring Relationships**

National Indian  
Health Board

